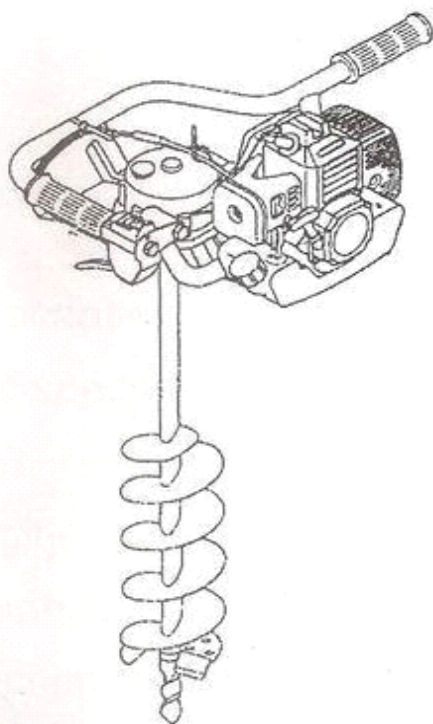

OWNER'S MANUAL

YardShape™ Power Auger



CAUTION

- Before using this machine, read this manual carefully.
- Keep this manual handy.

Thank you for buying a YardShape™ Product. This manual provides important information about safety and operation of our product. We also have an on-line expanded manual and trouble-shooting guide at YardShape.com



To the user

Thank you for purchasing Yardshape™ products. This manual has been compiled to give you a complete understanding of how to assemble, operate and store the equipment. Be sure to read this manual thoroughly before using your **Products**.

Yardshape™ develops and perfects products on a continuous basis. For this reason, you may find that some of the latest improvements to the actual product may be missing from this manual.

Contents

A. Safety rules and precautions	4
B. Names of parts and specifications.....	6
C. Assembly	7
1. Gear case-to-engine	7
2. Throttle wire engine-to- gear case connection	7
3. Wiring leads	8
4. Drill-to-gear case	8
D. Before usage.....	9
E. Engine	10
F. Maintenance, checks and storage	16

A. Safety rules and precautions

**To ensure the safety of you and others,
READ the following precautions before using the equipment.**

Dress

1. Wear a long-sleeved shirt and long pants closed at the cuff.
2. Do not wear a neck-tie or other loosely dangling garments. Such articles may become entangled in the drill when working.
3. Wear protective goggles to protect eyes from flying objects.
4. Wear a work cap when working on flat ground and a helmet when working on slopes.
5. Wear work shoes equipped with no-slip tread.
6. Wear ear plugs or other adequate device to protect the ear drum from noise.

Environmental precautions

1. Do not work for long periods of time in summer and winter. Take breaks frequently.
2. Do not use the auger in the rain. The possibility of you slipping is increased when the ground is wet.
3. Do not use the auger indoors or in poorly ventilated places. EXHAUST IS POISONOUS.

Strictly NO FIRE

This equipment runs on gasoline.

1. Do not smoke or introduce live flames in the vicinity of the auger.
2. Do not remove the gas cap or refuel while the engine is running or hot.
3. Wipe the auger body dry of any spilled gasoline after refueling.
4. Ensure at least 3 m distance from fuel sources when starting the equipment up.
5. Keep flammables away from the muffler and the exhaust path.
6. Store fuel in approved containers only and keep in a cool place.

Checks before start-up

1. Check all bolts and nuts are securely tight. Tighten where necessary.
2. Check the cutting blades are well filed and void of chipping, cracking or bending
NEVER use a drill when damaged.
3. Use only approved parts for repairs and maintenance.

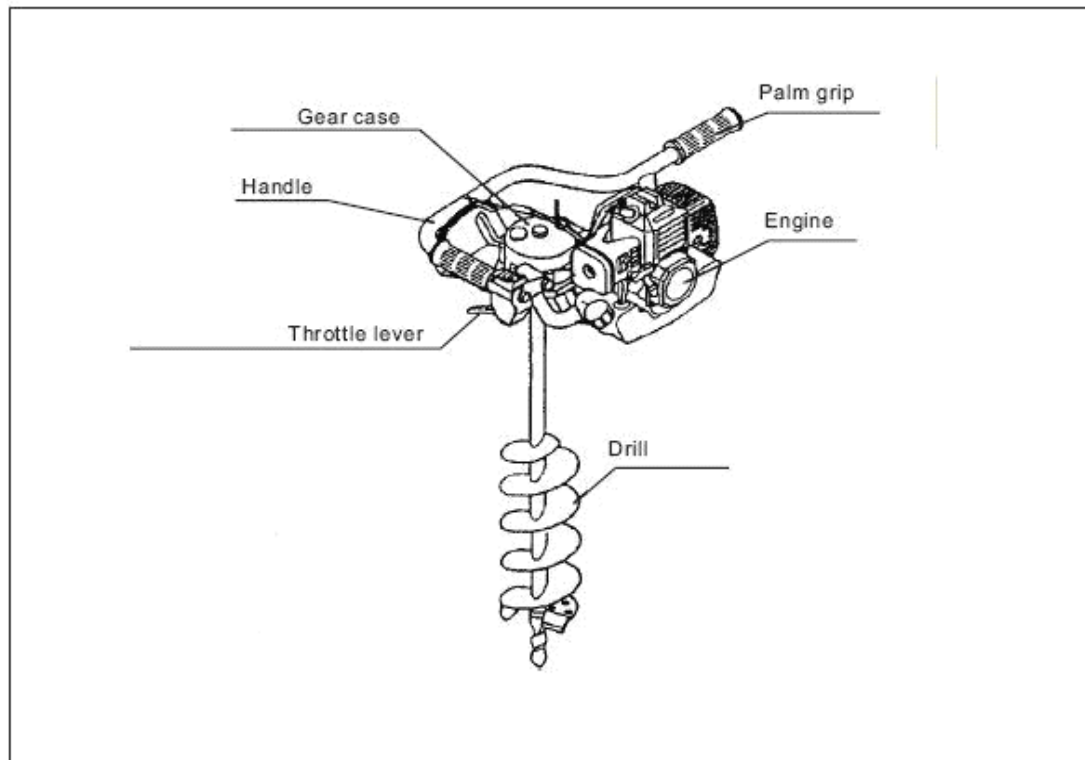
Cautions during usage

1. Do not allow other persons within 5m of the worksite. It is DANGEROUS for pets and children to be near the equipment when operating.
2. Use caution when drilling through rocky ground. This equipment may rotate in reverse.
3. It is DANGEROUS to use the auger in an awkward or uncomfortable position. Lay sturdy planks before starting, and work only from a stable position.
4. Be sure to stop the engine before allowing persons to approach within 5m of the equipment. Make sure anyone approaching the auger approaches it from the front.
5. Always stop the engine and take the necessary cautions when suspending work or moving to another location.
6. Do not allow children or anyone who is unskilled in equipment usage, to operate the equipment.
7. Never touch then drill bit while the engine is running, Be sure the engine is off and the drill has stopped rotating before handling.
8. Beware of the rotating drill bit. Keep feet, hands, other body parts, and clothes away from the drill bits.
9. Make sure the drill bit has stopped moving before placing on the ground.
10. Release throttle when the drill bit is excessively loaded or when rotation has stopped.
11. When deep drilling, do not attempt to complete work in 1 stretch. Extract soil in 2 or 3 steps.

Precautions after usage

1. Before servicing the auger or making repairs. ALWAYS stop the engine, remove the plug cap from the spark plug, and allow the engine to cool down.
2. Before storing the auger, drain all remaining fuel and wipe the equipment clean of dirt and debris. NEVER store the auger near live flames.

B. Names of parts and specifications



Specifications

BZ44-5

Engine Model:

Engine Type: air-cooled, 2stroke

Displacement: 49 cc

2-cycle oil/gasoline mixing ratio: 1:25

Ignition: CDI

power: 2.5HP

carburetter: Diaphragm type

Fuel tank capacity: 1.2L

Driller diameter: 100mm/150mm/200mm

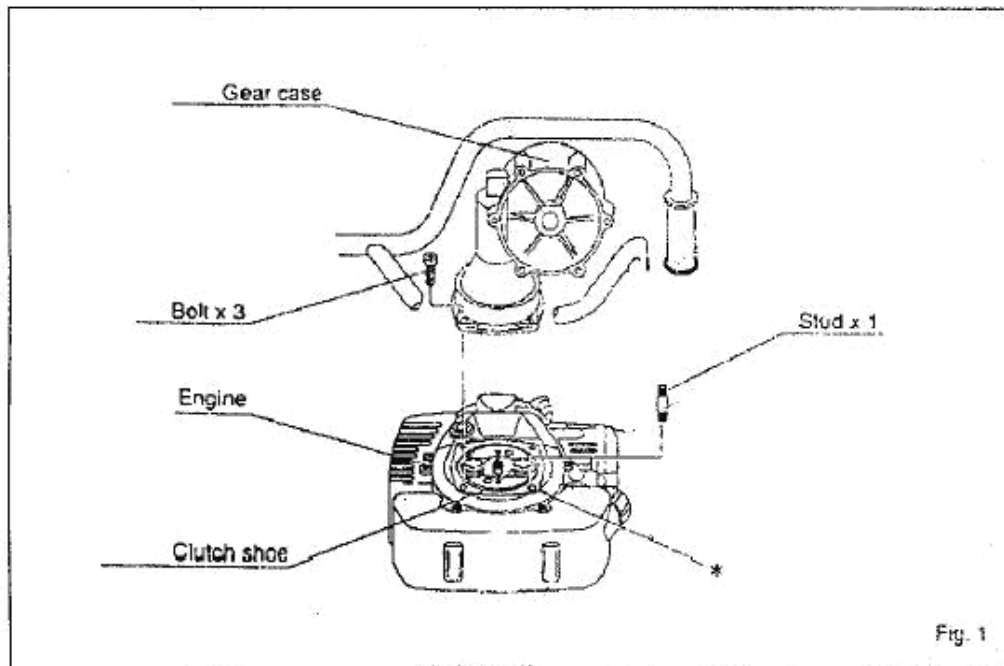
G.W/N.W: 10.9/9.5kg

(4.0/3.2kg) or (4.6/3.8kg) or (5.2/4.6kg)

C. Assembly

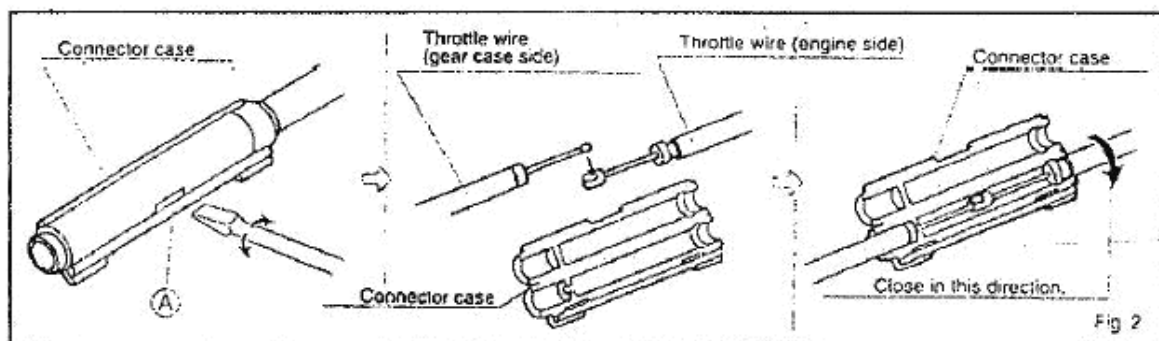
1. Gear case-to engine (Fig.1)

- (1) Lay the engine on the ground with the clutch shoe facing upwards. Screw the stud into the *marked hole (1 spot only).
- (2) Set the gear case on the engine and loosely tighten the stud and nut.
- (3) Screw the other 3 bolts into the remaining 3 holes, then tighten all 4 bolts securely and evenly.



2. Throttle wire engine-to-gear case connection(Fig.2)

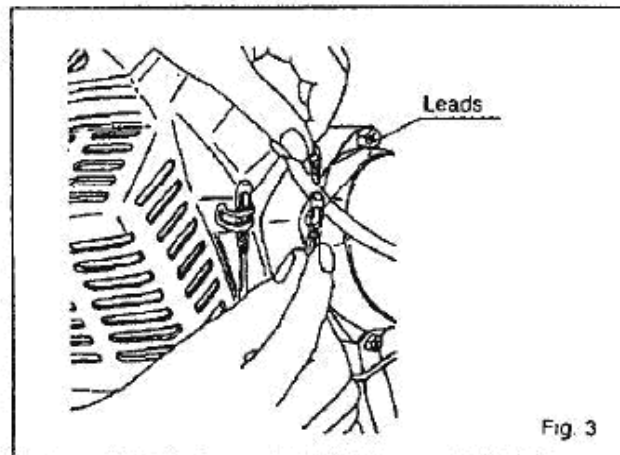
- (1) Work open the connector case using a slotted screwdriver at point A, and remove the case.
- (2) Connect the throttle wire end on the engine side to its counterpart on the gear case side.
- (3) Reattach the connector case.
- (4) Close the case securely.



3. Wiring leads(Fig.3)

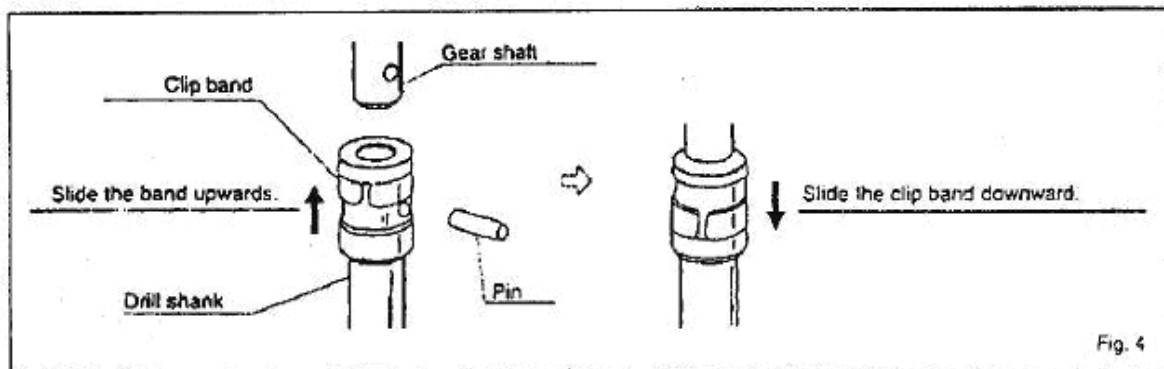
Connect the leads(x2)between the engine and gear case.

Make sure colors match and connections are securely tight.



4. Drill-to-gear case (Fig.4)

- (1) Slide the clip band upward and pull the pin out from its hole.
- (2) Align the pin holes on the gear shaft and drill shank, and insert the drill over the shaft.
- (3) Reinsert the pin through the pin hole and lower the band until the hole is covered.



D. Before use

1. Checks

- (1) Check parts are not loose nor missing.

This goes ESPECIALLY for the spark plug.

- (2) Check the air intake and outlet for clogging.

This auger uses an air-cooled engine. If the air passage is blocked, the engine may overheat.

- (3) Check the air cleaner for dirt. A dirty air cleaner will cause the auger to burn excess fuel.

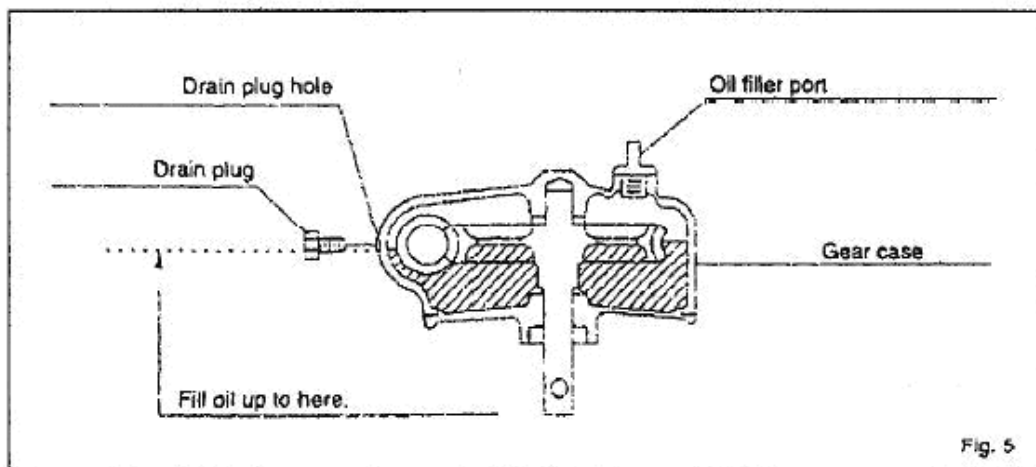
- (4) Check the spark plug for spark.

2. Adding oil(Fig.5)

- (1) Change the oil once after the first 50 hours and then every 100 hours thereafter. Change oil while engine is warm.

- (2) Add 250 cc of oil. (SAE 80-90 gear oil)

- (3) Do not add oil past the drain plug hole. To determine oil level, stand the auger on the dnrl. Oil level should be at the bottom of the drain plug hole.



D. Motor

1. Preparations before starting the motor

- (1) Fill tank with fuel. Use a mixture of gasoline and 2 stroke oil

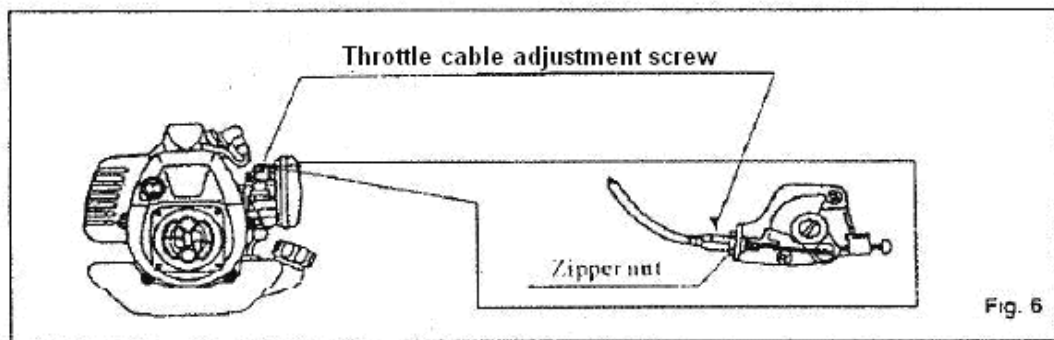
Gasoline to oil mixture ratio is 25:1

Caution

If you use an incorrect mixture of gasoline and oil, the engine may be damaged.

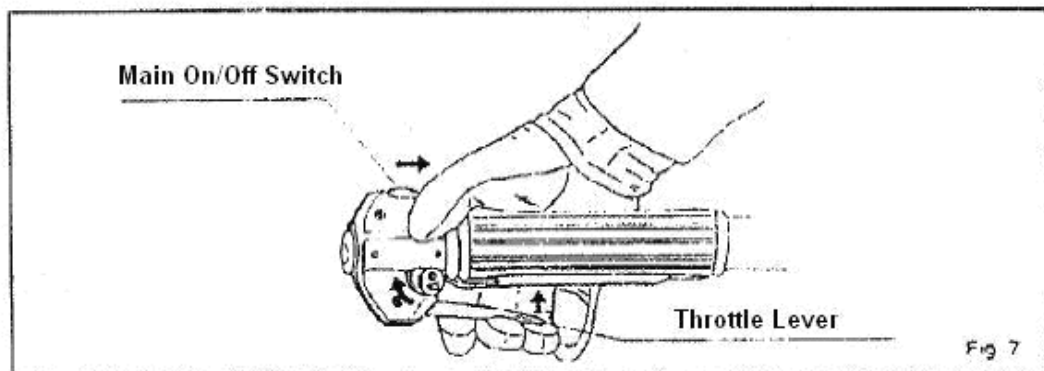
- (2) Throttle cable (Fig.6)

Adjust the cable

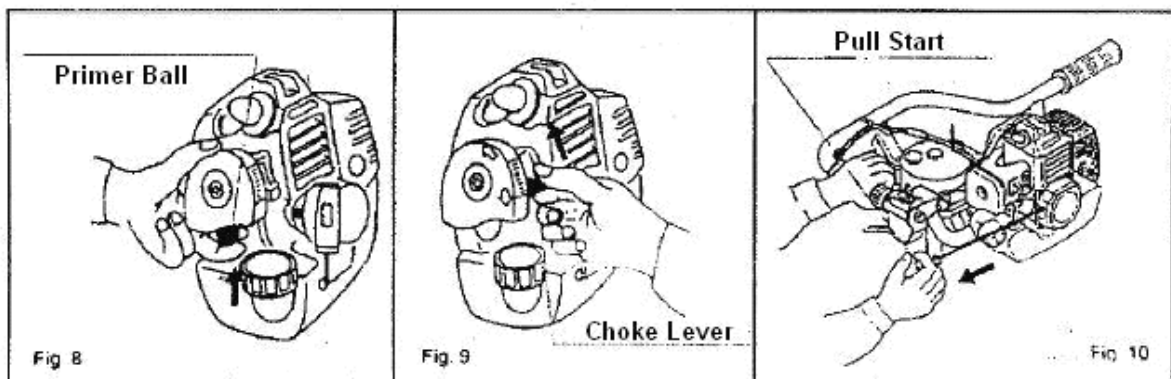


2. Start

- (1) Turn main switch to ON (Fig. 7)
- (2) Your throttle assembly may not be as shown.



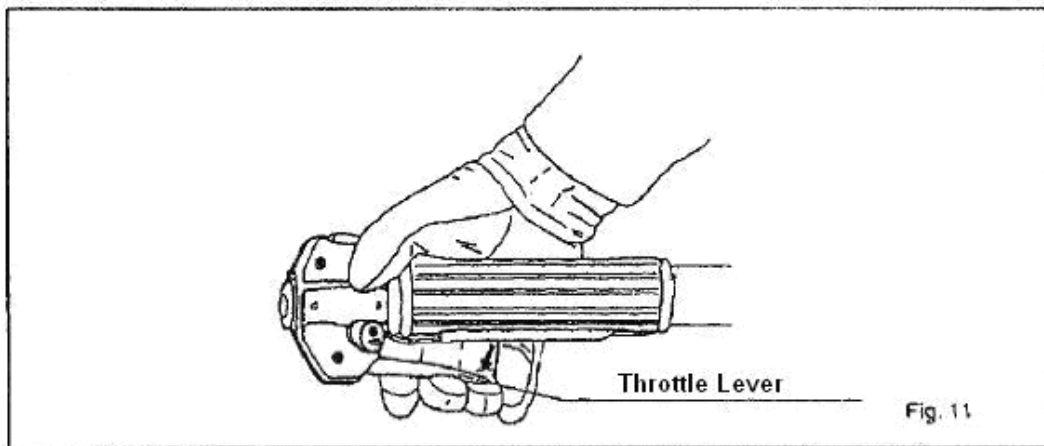
- (4) Pump primer ball on bottom of carburetor about 10 times. (Fig.8)
- (5) Move choke lever up for cold starts to block air flow to carburetor. (Fig. 9)
- (6) Grasp handle of pull start chord and pull quickly. (Fig. 10)
- (7) Move choke lever down as engine warms. If unit does not start the first pull, re-prime carburetor and try again.
- (8) Make sure that throttle is set to idle.



The primer ball pumps gas through carburetor and back into the gas tank. It is not possible to over-prime the carburetor.

3. Operation (Fig.11)

- (1) Let engine warm for at least 1 minute. Choke lever should now be all the way down.
- (2) Press or release throttle lever to get desired rpms.



Note:

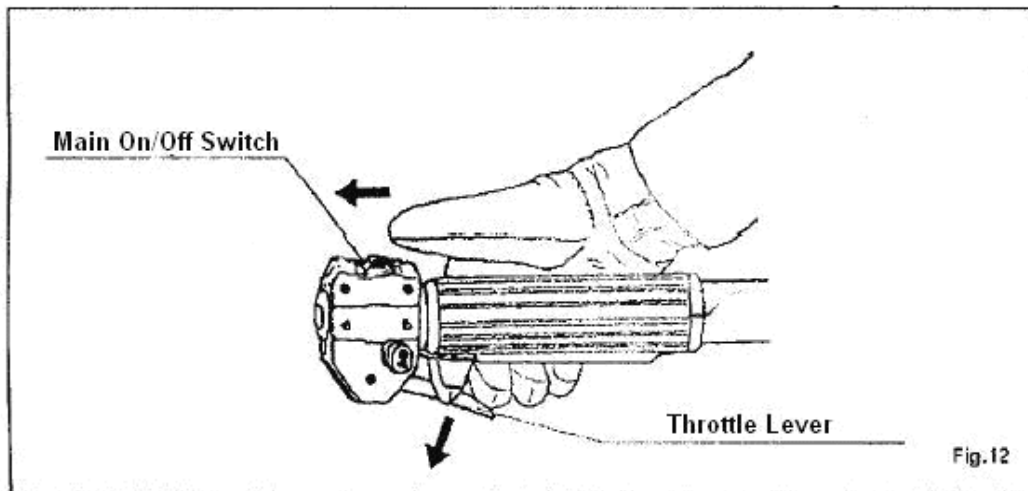
- Avoid running at high rpms for long periods right away as the unit needs time for lubricant to get to all the internal parts.
- High rpms are harder on the motor. Do not run the motor at high rpms without load.

4. Stopping (Fig.12)

- (1) Release throttle to idle speed.
- (2) Move main on/off switch to OFF.

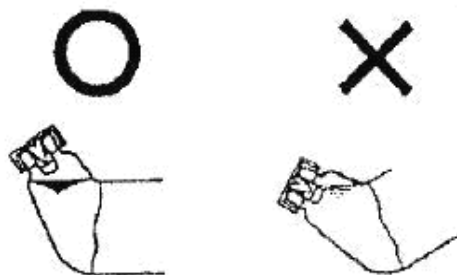
[Note]

When storing for long periods, remove all fuel from the gas tank and then start the engine to use up all the fuel in the carburetor.



Caution

- Do not leave the gas tank at an angle where gas is pressing against the tank cap for long periods. The pressure inside the tank can cause the gas to spill out from the vent in the cap.
- The working parts of the engine can get very hot.



5. Adjusting the carburetor (Fig.13)

(1) Idle adjustment screw:

- Turn clockwise to increase the revolutions per minute
- Turn counterclockwise to decrease revolutions per minute

(2) Low speed fuel mixture screw

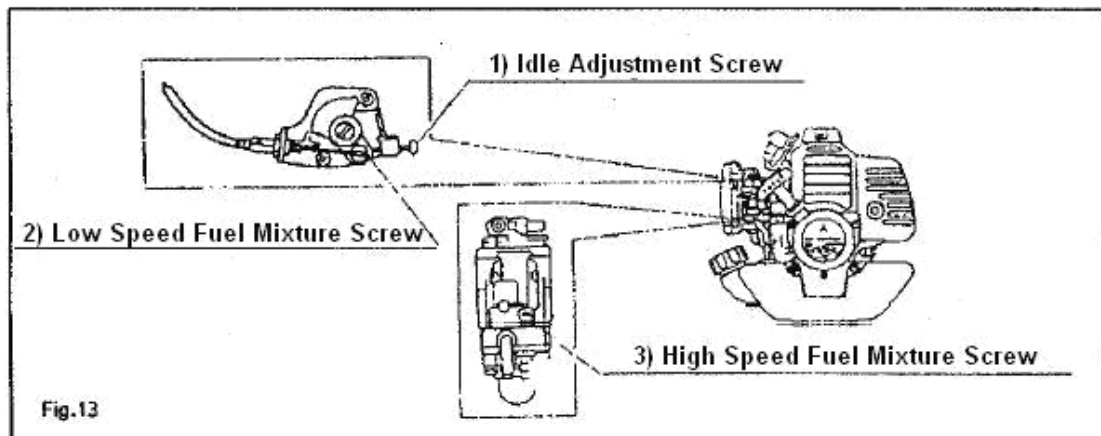
- Turn clockwise to decrease mixture of fuel-air
- Turn counterclockwise to make mixture of fuel-air richer

(3) High speed fuel mixture adjustment screw (if equipped):

- Turn clockwise to decrease mixture of fuel-air
- Turn counterclockwise to make mixture of fuel-air richer

[Note]

Generally it is not necessary to adjust the carburetor as the motor is set at factory to the best position. Incorrect mixture adjustment can cause damage to the machine or operator.



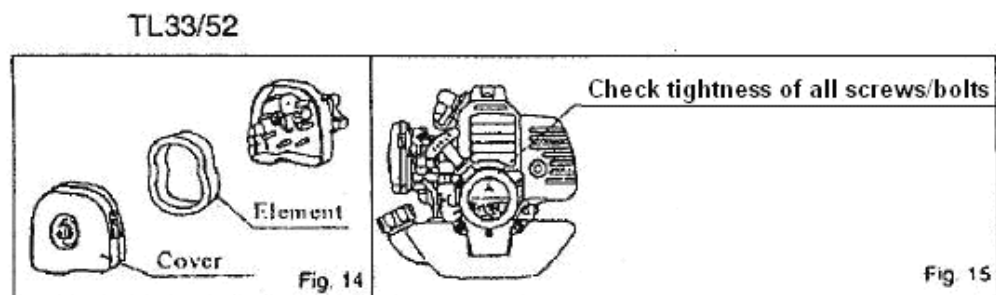
6. Daily maintenance

- Clean the air filter

After cleaning the filter, add some drops of oil to keep it lubricated. (Fig.14)

- Check all bolts/screws

Periodically check all screws and bolts to make sure that they are tight (Fig.15)



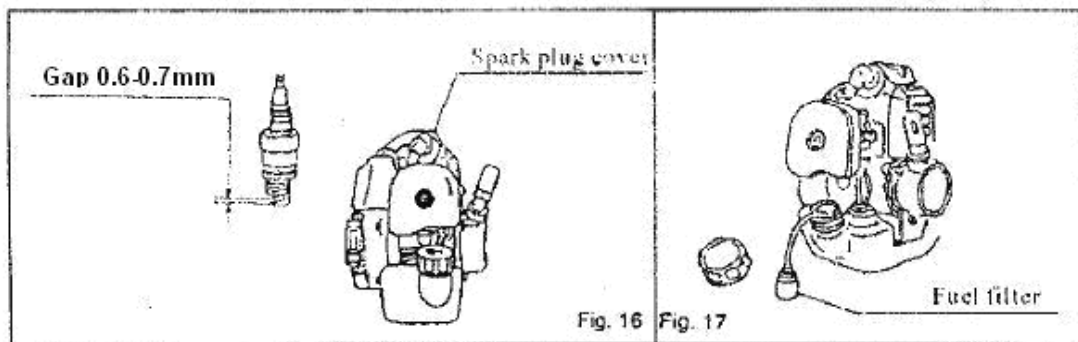
7. Maintenance after 50 hours of use

- Clean and adjust the spark plug

Clean sediment and carbon from the surfaces. Adjust the gap to 0.6-0.7mm (about 3 post cards (Fig. 16)

- Clean the fuel filter

With a hook, pull the fuel filter out of the tank and inspect. If dirty, replace with a new one. (Fig.17)



8. Long Term Storage

When storing for more than a month:

- (1) Remove fuel from tank. Run engine until it runs out of fuel.
- (2) Clean the inside of fuel tank and the fuel filter with clean gasoline.
- (3) Remove the spark plug and put small amount of dean motor oil in the spark plug hole. Pull the starter about two or three times, then stop pulling when the piston is at the top. Replace the plug.
- (4) Clean the external parts of the motor with a cloth soaked in oil and leave the motor in a dry place away from fire or heat

Suggestion

Motors stored for long periods with gas in the tank and carburetor will have reduced performance.

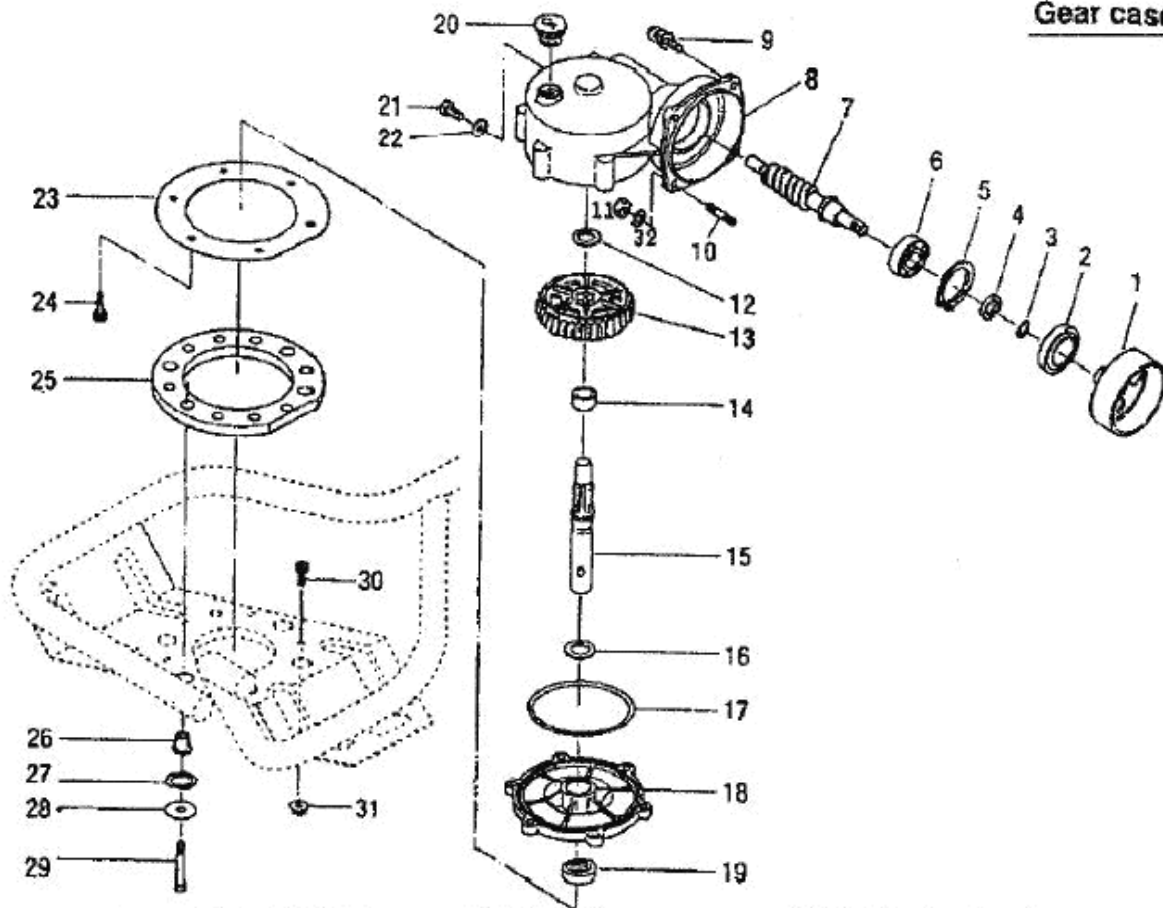
F. Prolonging the Life of your Machine

- (1) Always keep your machine in good condition.
- (2) Check for loose parts. Tighten any loose parts before use.
- (3) When storing:
 - Drain the fuel tank and start the motor to burn any remaining fuel.
 - Remove the spark plug and put oil in the cylinder. Put back plug and pull start engine a few times.
 - Check the air filter. Clean before using.
 - Keep the motor in a dry place. Make sure it is kept away from dust.
 - Always repair damaged parts before using.

Suggestion

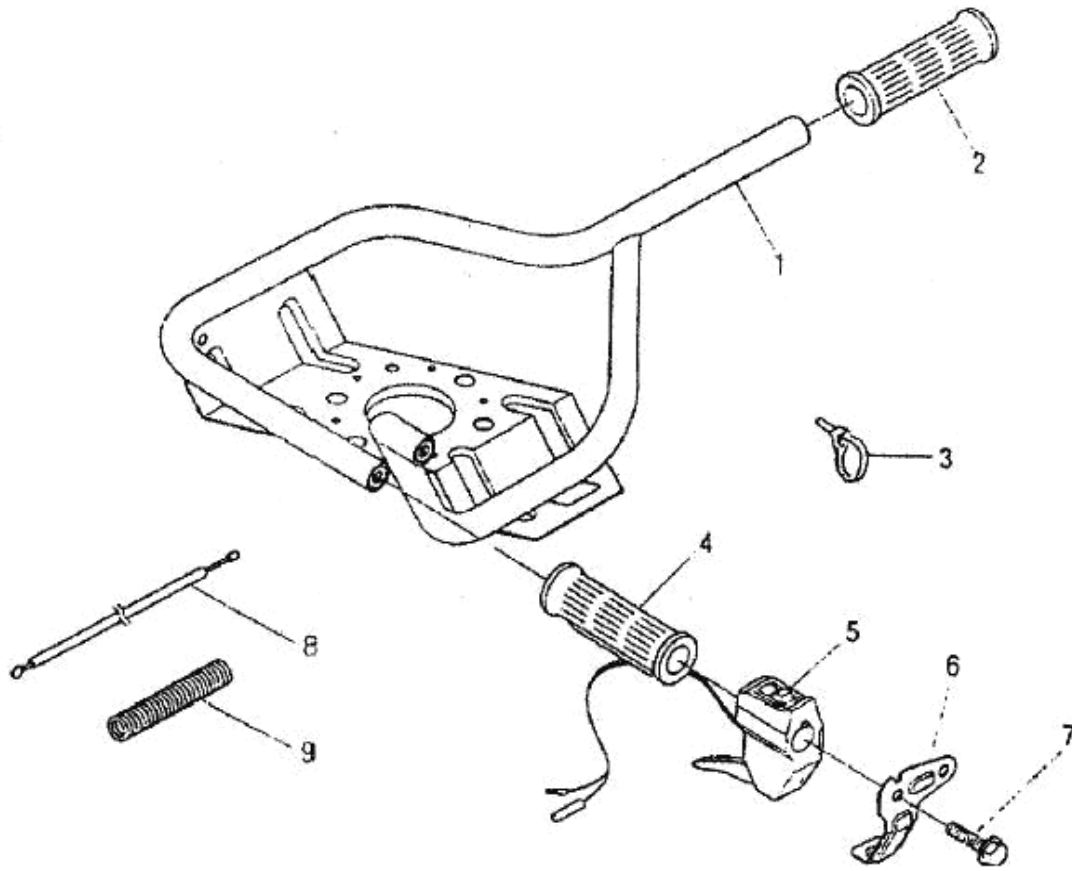
If the unit is stored for long periods with gas in the tank or carburetor, sediment will cause performance problems. Remove fuel from the tank and carburetor before storing.

Gear case



NO.	PART NO.			Q'TY	Q'TY		RECOMM (%)
					Included		
1	11014	195		1			5
2	61002	190	TC20477	1			4
3	214B	1200	S12	1			4
4	68004	112		1			3
5	811V	4700	Ø47	1			3
6	913B	6204	6204	1			4
7	78006	125		1			4
8	51114	117	02	1			3
9	314L	0624	M6×24	3			3
10	31039	133	M6	1			3
11	512L	0600	M6 2 種	1			3
12	68004	102		1			3
13	78007	109		1			4
14	11083	103		1			3
15	64001	108		1			4
16	68004	101		1			3
17	214B	10500	S105	1			4
18	51079	113		1			3
19	61002	127	TC20358	1			4
20	91043	103		1			3
21	311L	0608	M6×8	1			3
22	68001	101		1			3
23	68009	1800		1			3
24	411L	0611	M6×30	6			3
25	36005	156		1			3
26	61024	175		4			3
27	664J	1600		4			3
28	6836	163		4			3
29	31062	132	412U0640	4			3
30	412U	0615		3			3
31	579L	0600		3			3
32	670L	0600		1			3

Frame



REF NO.	PARTS NO.	QTY	Included		
1	11062 147	1			
2	36010 101	1			
3	68028 103	3			
4	36011 104	1			
5	71056 170	1			
6	11113 297	1			
7	312L 1030	2			
8	91001 184	1			
9	41003 154	1			

REF NO.	PARTS NO.	QTY	Included		

